

AutoPOL

for  Microsoft Windows

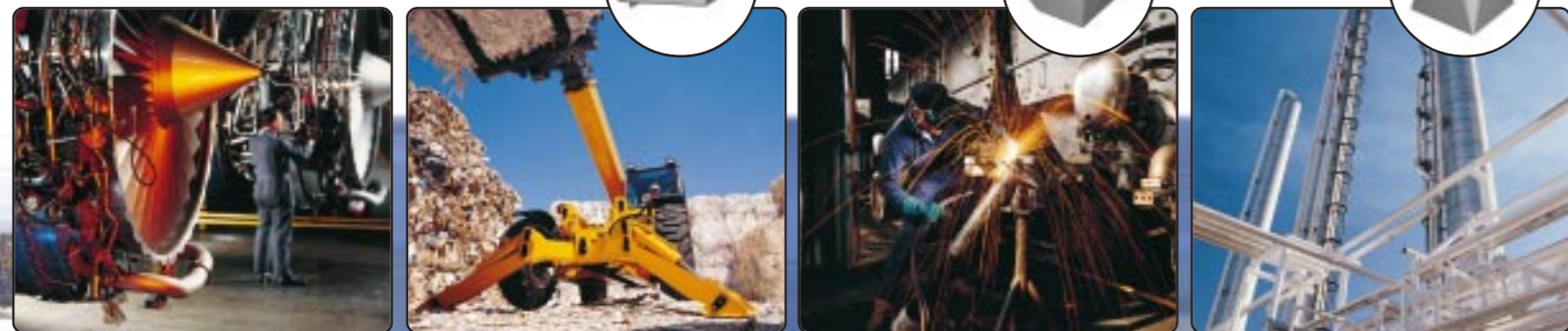
AutoPOL Unfolder for Windows...

is an application for the sheet metal industry that will unfold 3D models. Based on the ACIS® 3D Geometric modeller, and technology developed by FCC Software, AutoPOL provides the most comprehensive unfolders currently available. All kinds of single curved models can be unfolded.

The imported 3D model can either be a solid or surfaces. AutoPOL Unfolder generates a flat pattern from even the most complex geometry, easily and efficiently. K-factor bend compensation can be applied to create an accurate flat pattern.

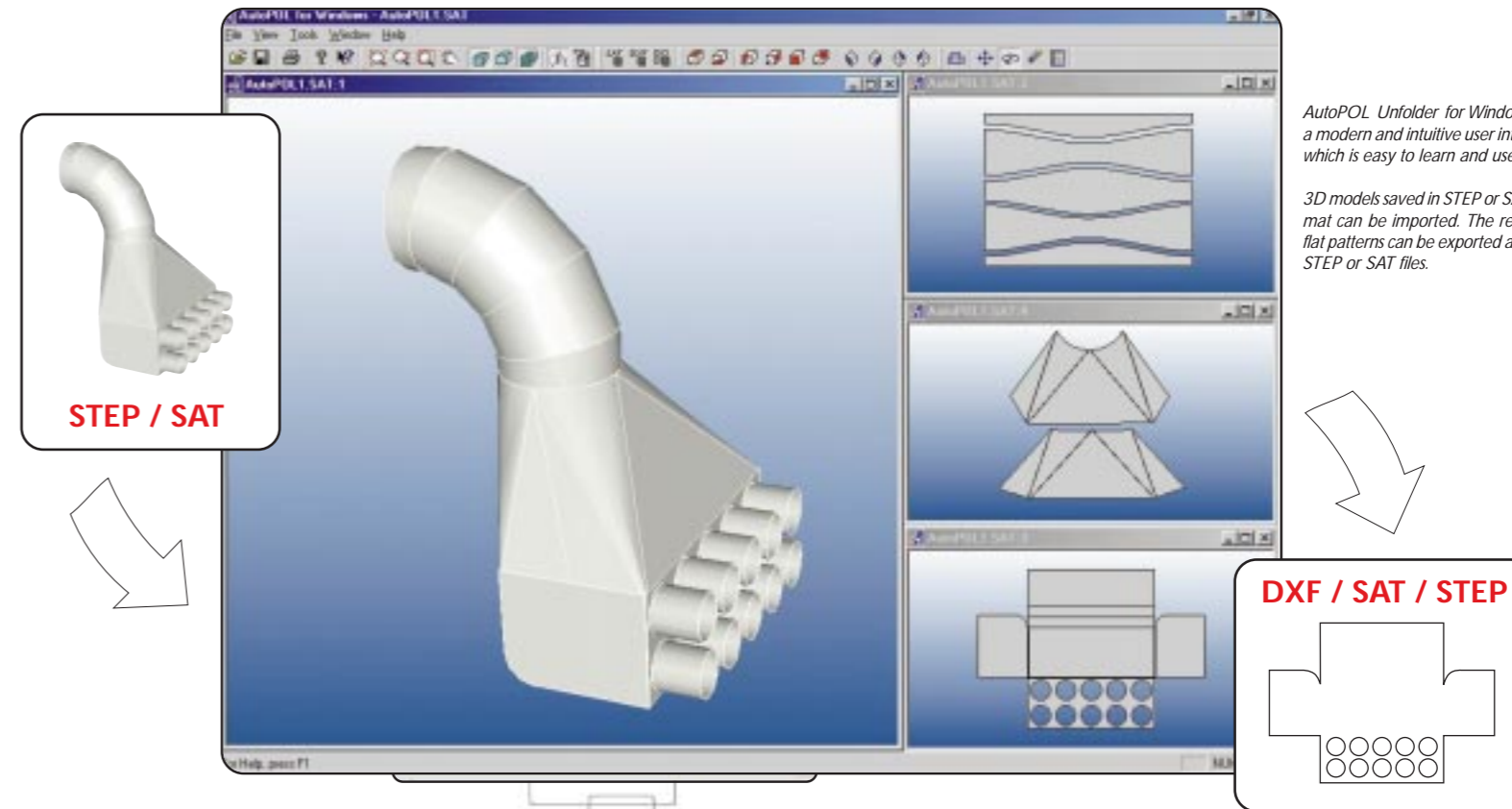
All sheet metal customers, independent of which CAD system they use, can benefit from using AutoPOL Unfolder. AutoPOL takes advantage of the latest programming technology and offers a software that ensures the highest quality and accuracy.

References...

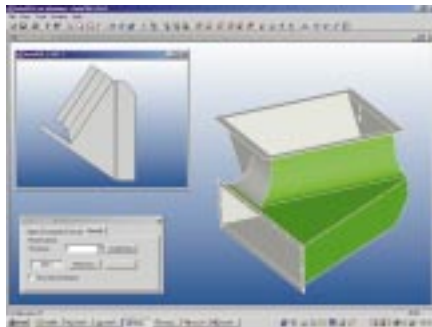


AutoPOL Unfolder is applicable to sheet metal models found within many industries including heating & air-conditioning, laboratory & pharmaceutical equipment, process & chemical, food handling, water supply & sewage as well as vehicle & machinery production.

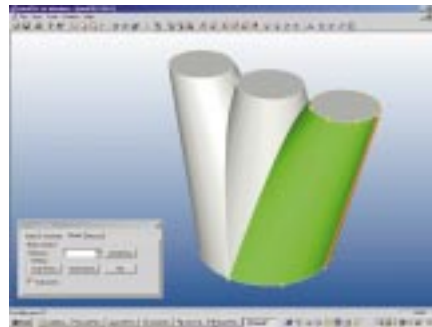
Import and Export...



Main Features...



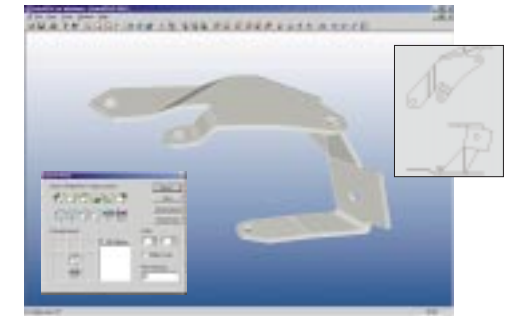
Manual selection of faces to create partial flat patterns from solid/surface models.



Unfolding of closed 3D solid/surface models. Location of the welding joint can be selected.



Configurable output when exporting unfolded geometry as DXF files. Line types and colours can be selected. Bend angles can be included.



2D-drawing views of the imported 3D model are exported as DXF files.

