

Anatomy of Cross Sections

Part 1: Multiple Section View Organization

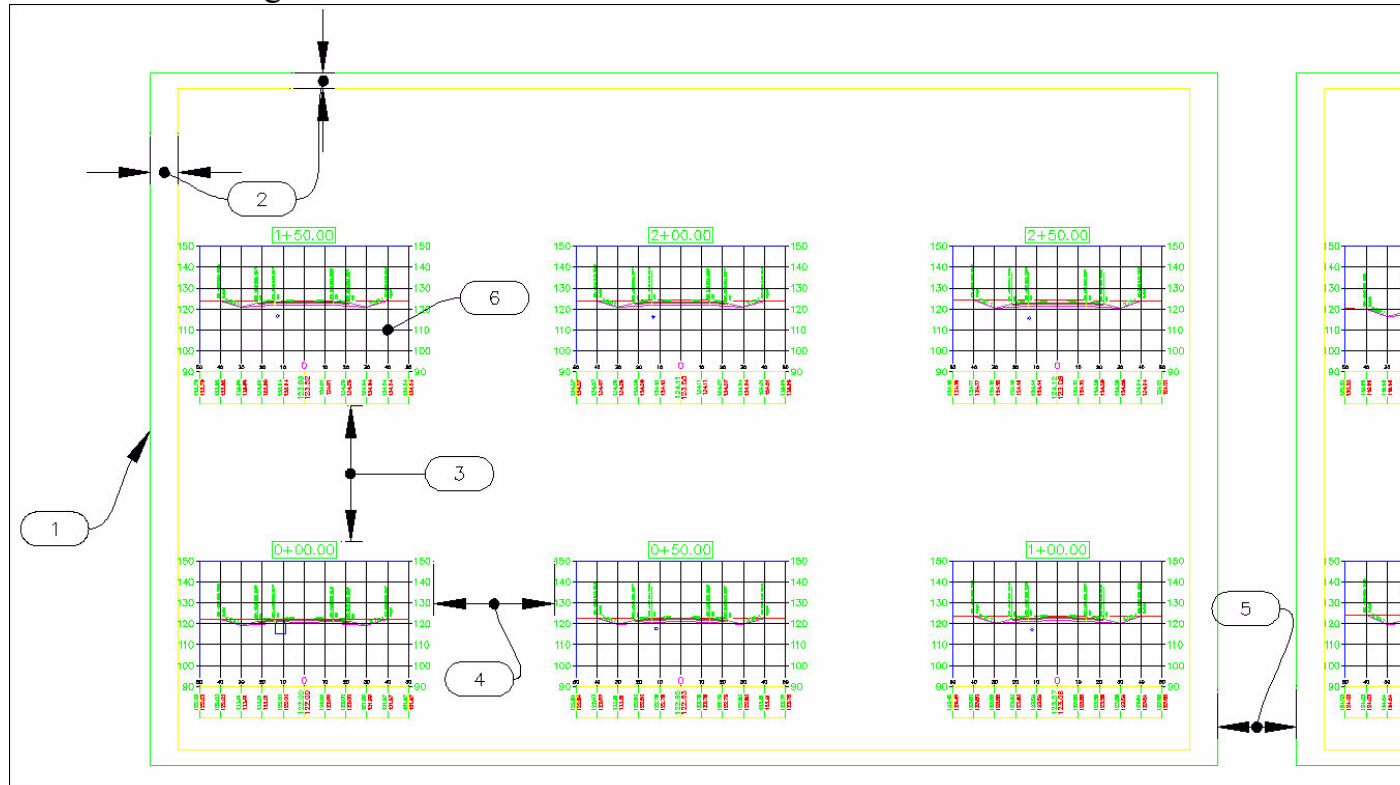




Figure 1

Number	What is it?	Where is it modified? (Name of Style from NCS extended template appears in quotes)
1	Sheet Border	Section Views > Sheet Styles > "Sheet Size - B"
2	Print Area Page Margins	Section Views > Sheet Styles > "Sheet Size - B" > Sheet Tab > Page Margins
3	Row Spacing	Section Views > Group Plot Styles > "Plot By Page" > Array Tab > Space Between Adjacent Section Views > Row
4	Column Spacing	Section Views > Group Plot Styles > "Plot By Page" > Array Tab > Space Between Adjacent Section Views > Column
5	Page Gap	Section Views > Group Plot Styles > "Plot By Page" > Plot Area Tab > Gap Between Successive Pages
6	Section View	Section Views > Section View Style > Road Section (more detail on this style in part 2 of this document)

Notes on creating Multiple Profile Views using Plot by Page:

 The sheet border and print area margins' sizes (items 1 and 2 above) are controlled by the model-space Annotation Scale. For instance, a B-sized sheet (plotted size 17"x11") will appear as 680'x440' in a 40 scale drawing.

 Row spacing and column spacing are affected by Data Bands. Even if the display is turned off for a data band title box, its width is still taken into account for column spacing. In the above example, the title box width was set to 0.001 to prevent it from widening the columns. Also, there is an empty band at the bottom of the section views to force a space between the margin and the bottom of the view. See part 2 of this document for more information on Band Sets.

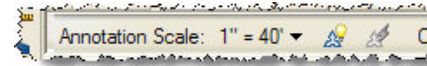


Figure 2

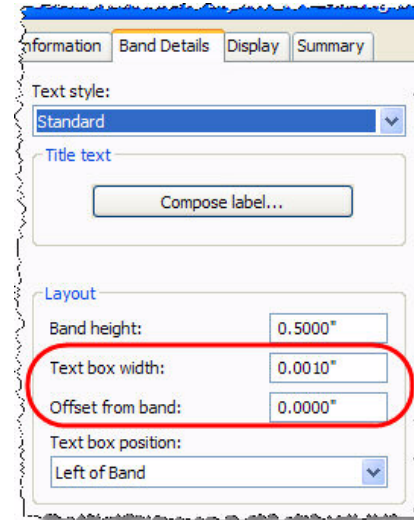


Figure 3

Part 2: Cross Section Views

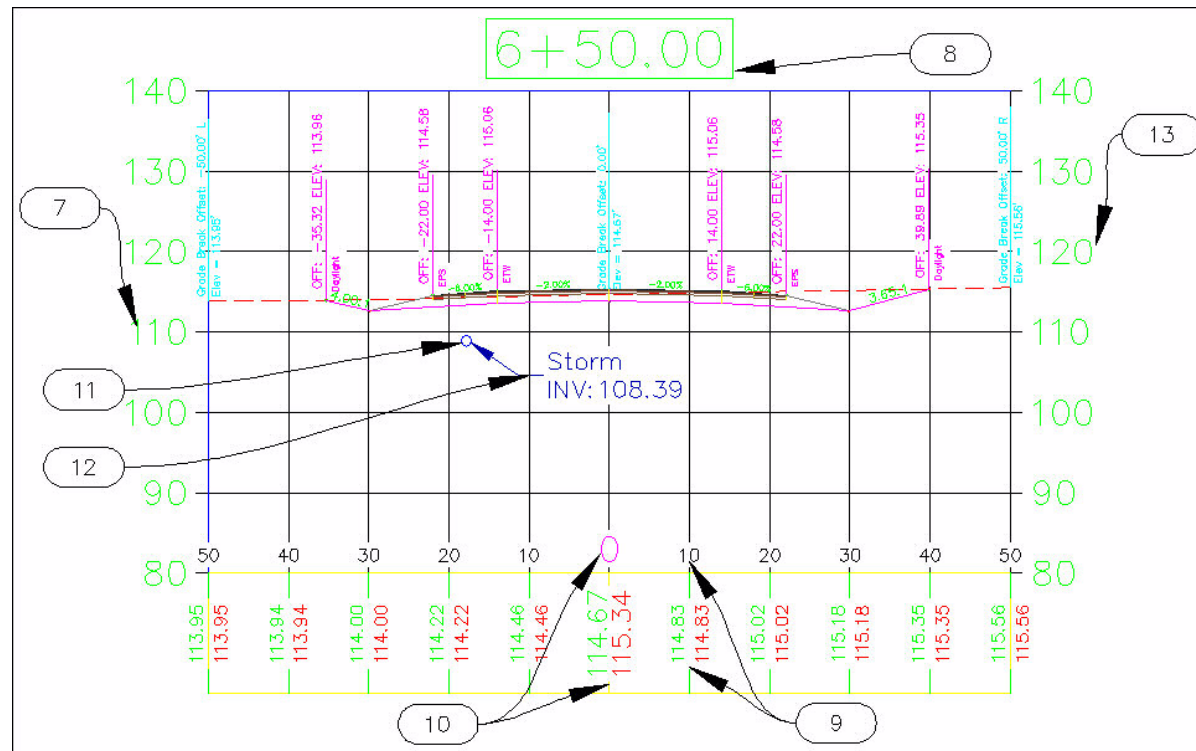


Figure 4

Number	What is it?	Where is it modified? (Name of Style from NCS extended template appears in quotes)
7	Left Axis Annotation Major	Section View > Section View Styles > "Road Section" > Vertical Axis tab > Major Tick Details (Left)
8	Graph View Title	Section View > Section View Styles > "Road Section" > Title Annotation tab
9	Major Increment Band Data	Section View > Band Styles > Section Data > [Custom Style] > Band Details Tab > Major Increment
10	Centerline Band Data	Section View > Band Styles > Section Data > [Custom Style] > Band Details Tab > Centerline
11	Pipe Network Section	Pipe > Pipe Styles > "Double Line (Storm)" > Section Tab.
12	Pipe Network Section Label	Pipe > Label Styles > Crossing Section > [Custom Style]
13	Right Axis Annotation Major	Section View > Section View Styles > Vertical Axis > Major Tick Details (Right)

Notes On Cross Section Views:

☞ Pipe Network Sections can be removed from the cross section view by right clicking on a single view, and selecting Section View Properties. In the sections tab, uncheck the data you wish to omit from the view. (See Figure 5)

☞ The text sizes for all the elements in a cross section view are dependant upon the Annotation scale.

☞ When Deleting a Group of Cross Section Views, the best place to do so is from Prospector. Go to the sample line group Properties and go to the Section Views Tab. Right-click on the group you wish to remove and select Delete... If you have page borders remaining after deleting the group, graphically delete them.

☞ After creating or re-creating section views, you may find that some data has been omitted. If this is the case, go to the sample line group Properties and go to the Sections Tab. Click the Sample More Sources button. Move information from the Available sources area to the Sampled sources area by using the Add button. (Figure 7) You will also need to perform this task if you have created new sources after the sample lines were created.

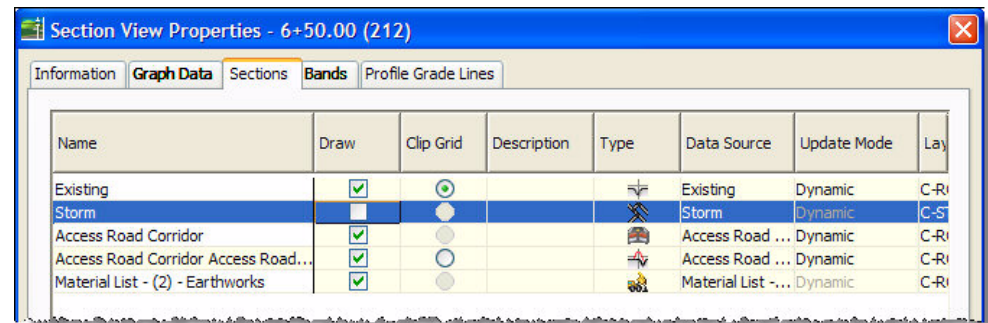


Figure 5

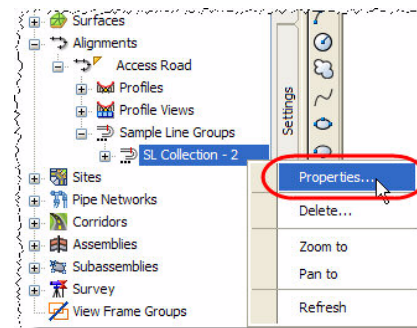


Figure 6

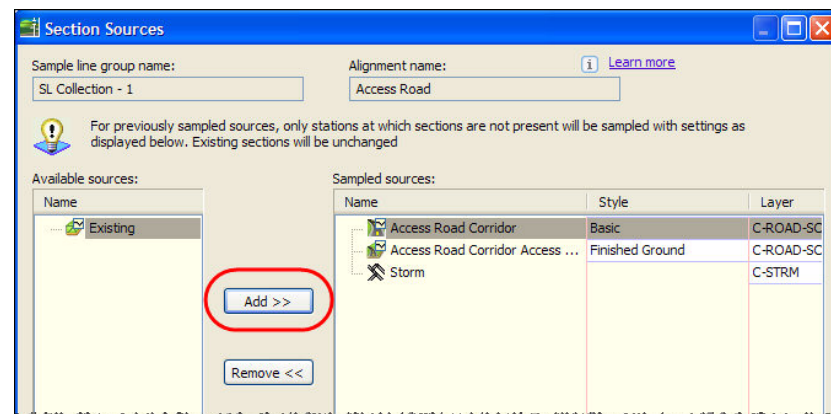


Figure 7

Part 3: Cross Section Data Close-Up

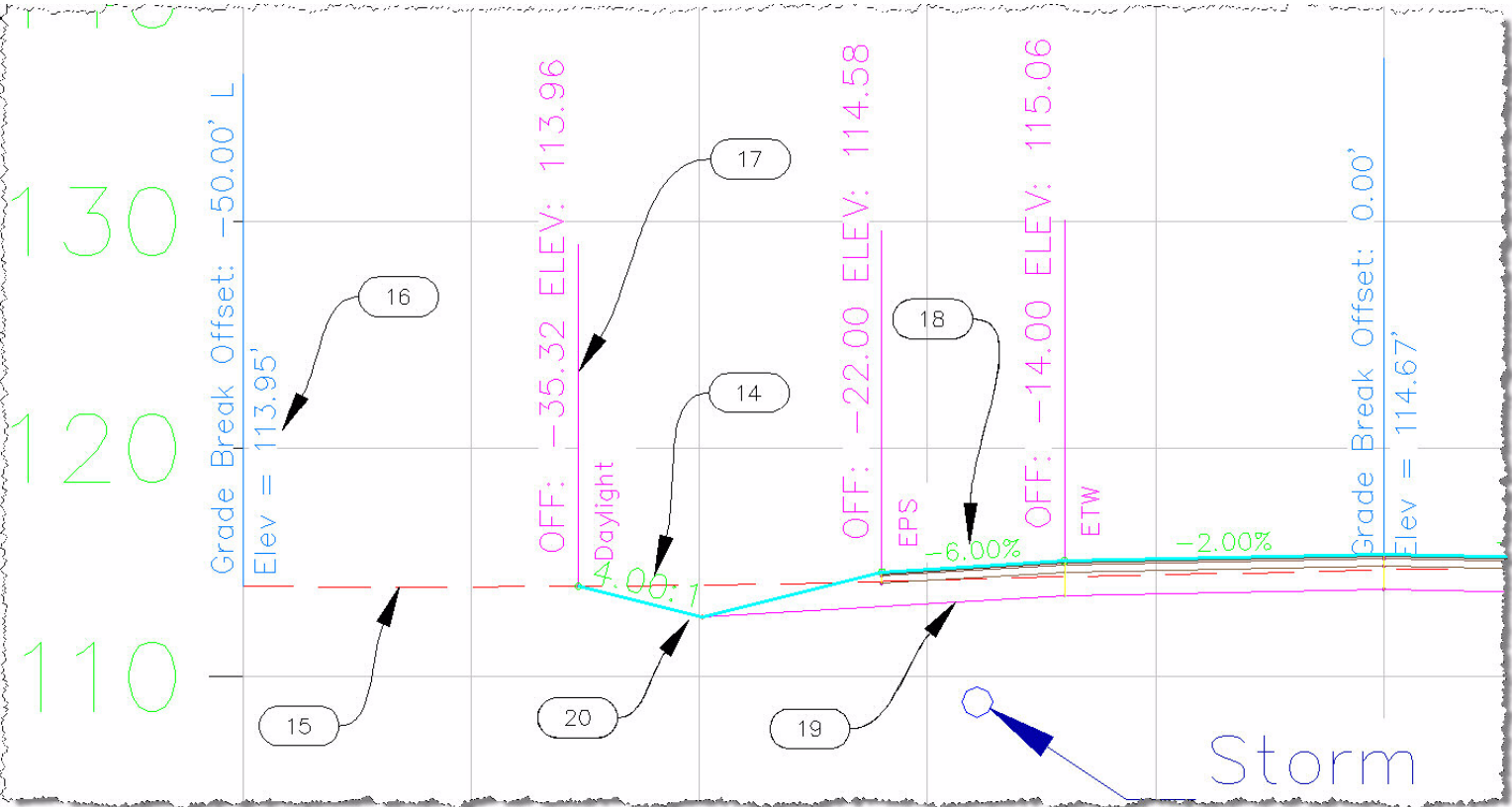


Figure 8

Number	What is it?	Where is it modified? (Name of Style from NCS extended template appears in quotes)
14	Assembly Link Label	General > Label Styles > Link > "Steep Grades" (applied to Link in Code Set Style)
15	Existing Ground Section	Section > Section Styles > "Existing Ground"
16	Section Grade Break Label	Section > Label Styles > Grade Break > "EG Section Offset and Elevation"
17	Assembly Marker Label	General > Label Styles > Marker > "Offset Elevation" (applied to Marker in Code Set Style)
18	Assembly Link Label	General > Label Styles > Link > "Flat Grades" (applied to Link in Code Set Style)
19	Assembly Link (Datum)	General > Multipurpose Styles > Link Styles > "Datum" (applied to Link in Code Set Style)
20	Proposed Ground Section (Corridor Surface)	Section > Section Styles > "Finished Ground"