
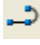


Creating ROW Lines in Cross-Sections

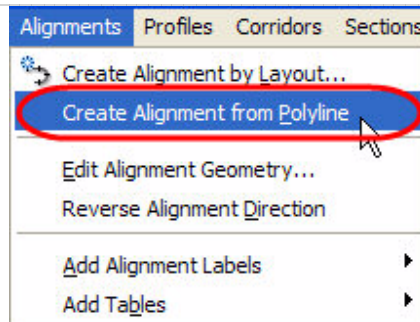
This document walks users through modifying sample line properties to show right-of-way lines in a cross-section view. These instructions will be more meaningful if users can:

- Create Sample Lines
- Create Marker Styles
- Creation Section Views

Step 1. **Establish your right-of way (ROW) lines.** You can use the regular AutoCAD Offset command and offset your centerline alignment  or use the polyline command to draw the ROW. 

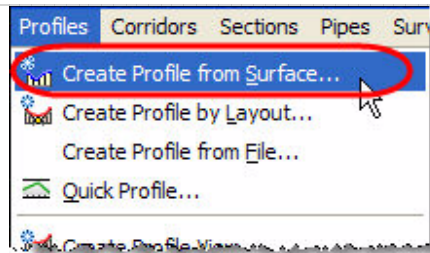
Step 2. **Convert both ROW lines to alignments.**

Go to Alignments > Create Alignment from Polyline and convert the lines you created in Step 1 to alignments.

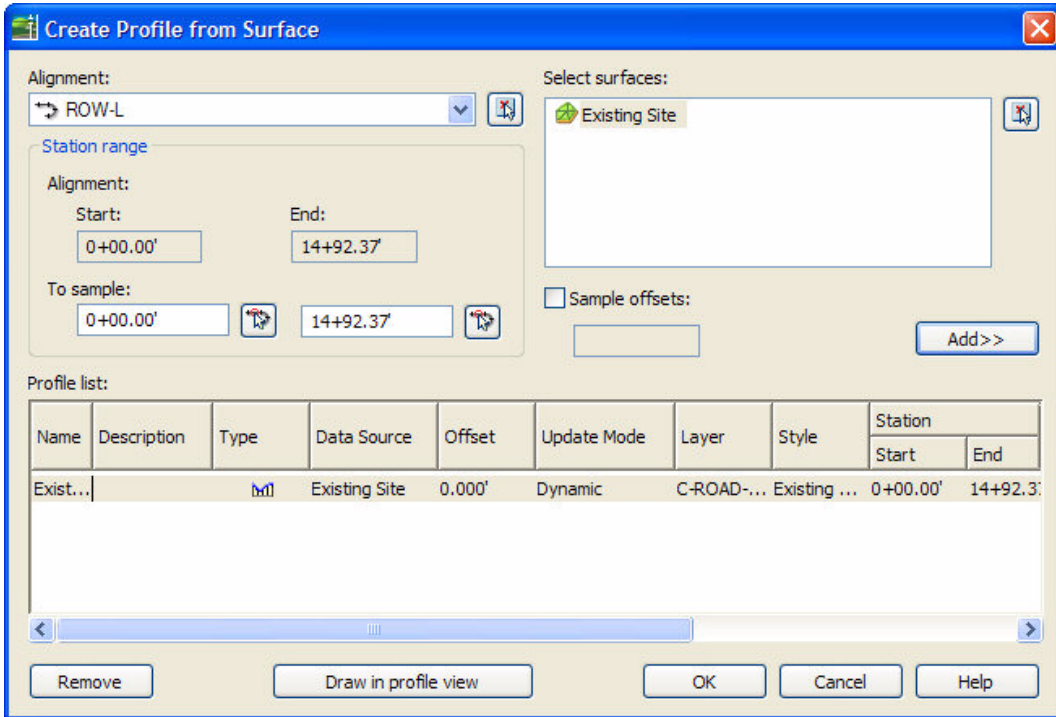


Step 3. **Create Existing Ground Profiles for both the ROW's.**

Go to Profiles > Create Profile from Surface...

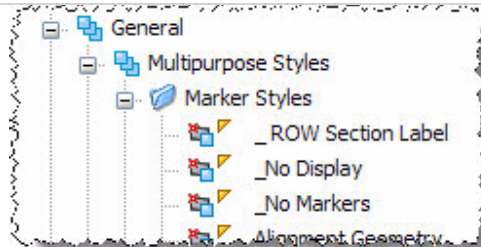


- Set your ROW as the active alignment.
- Click on the existing surface you are profiling from.
- Click Add.
- Click OK.
- Repeat Step 3, a-d for the second ROW alignment.



Step 4. Create a style you'd like to use as the ROW marker.

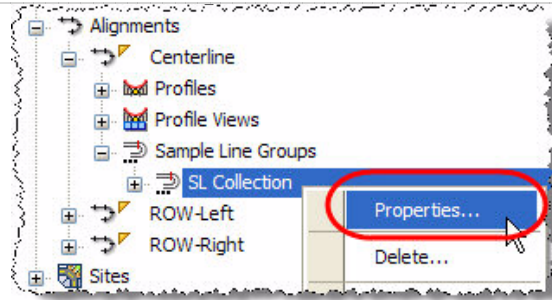
You can drag and drop a style from an existing drawing or create a new symbol. The style used is located in the Settings Multipurpose styles as shown here.



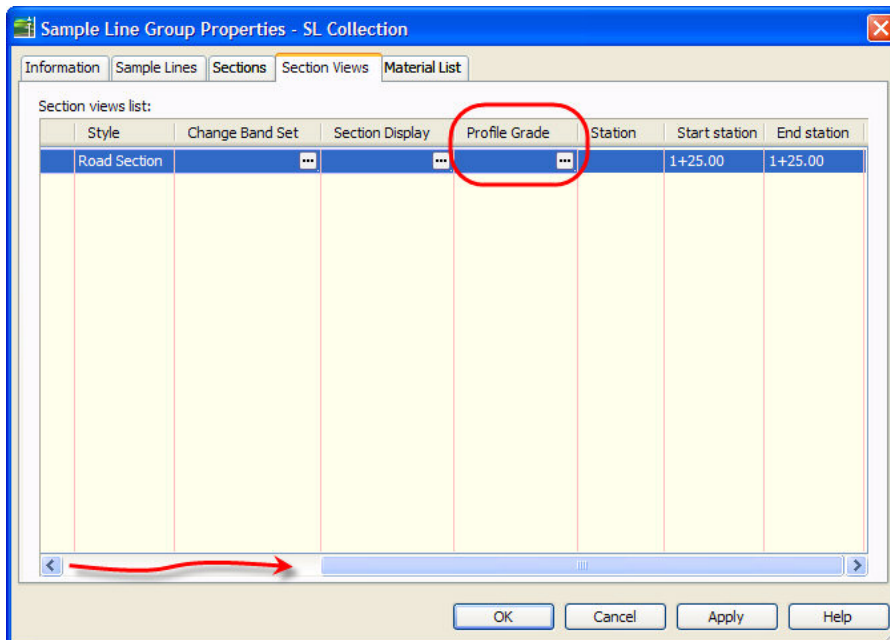
Step 5. **Create Sample Lines if you have not already.** Create the sample lines based off of your centerline alignment.

Step 6. **Modify the Sample Line Properties.**

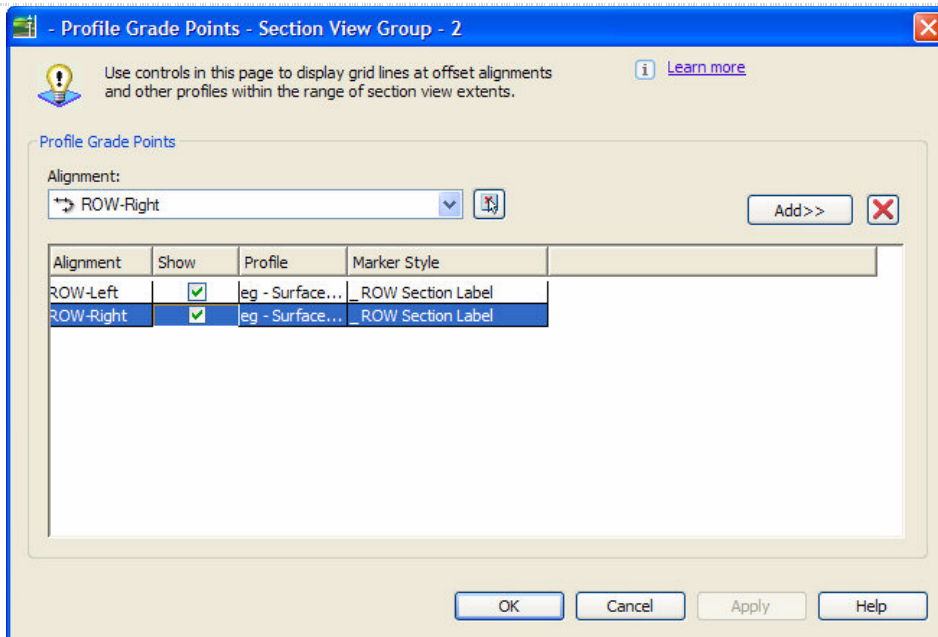
In Prospector, right-click on the Sample Line group. Select Properties.



- Go to the Section Views tab.
- Scroll over until you see the Profile Grade Column.
- Click the ellipsis button.

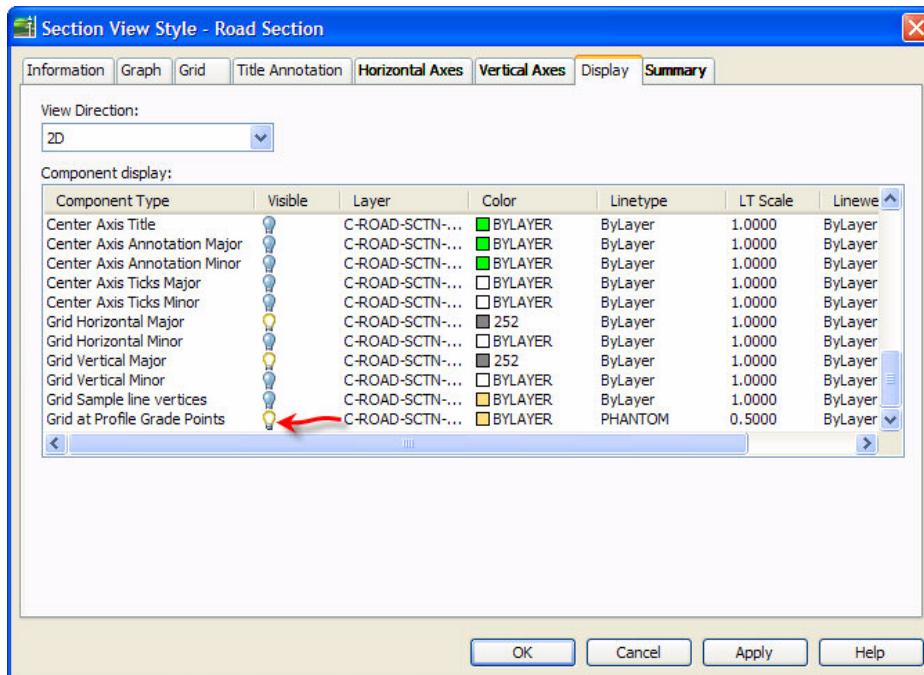


- In the Profile Grade Point dialog box, select your ROW alignments from the dropdown and select Add for each one.
- Click on the Marker Style box to change the marker to the one you require.
- Click OK.



Step 7. Lastly, modify the section view style to display the ROW lines.

- a. In Settings, go to Section View > Sections View Styles and right-click the name of the style. Select Edit.
- b. Go to the Display tab and turn on Grid at Profile Grade Points.
- c. Click OK.



If you already have profile views created you will see the new marker and ROW shown in the view. If not, the changes will be apparent when you create your section views.