

## Installing Sam Report Lite with FlexLM

Sam Report Lite is a utility included with most Autodesk products to generate in depth reports on network license usage. The use of SamReport is optional.

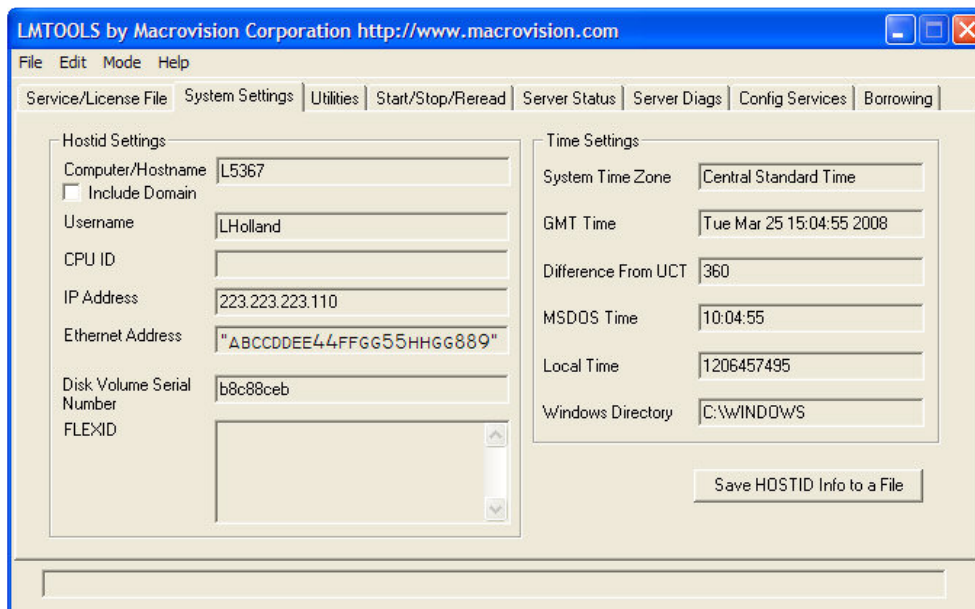
This document was written with several assumptions:

- The user is familiar with basic network license manager setup.
- The user has a general knowledge of Windows.
- The user has administrator rights on the server.

1. Before you begin to set up Sam Report-Lite, have your license manager up and running.

For information regarding network license manager setup see:

<http://usa.autodesk.com/adsk/servlet/ps/item?siteID=123112&id=10252702&linkID=9240617>



2. Go to the system Settings Screen and write down the Ethernet Address. Keep LMTOOLS open for later use.
3. Before you install SAM Report Lite, obtain a license file for it from <http://autodesk.globes.com>
  - a. Fill out the information it asks for and select **Submit Online**

**Autodesk** **macrovision™**

### Welcome To Web Fulfillment for SAMreport-Lite

On this site you can obtain a license to run the SAMreport-Lite program provided by your software vendor.

Enter customer information:

\*First Name

\*Last Name

\*Company

\*Phone

Fax (Optional)

\*Email Address

\*Address

\*City

\*Zip

\*Country

\*State

- b. Click the appropriate license scheme for your server setup type. In this example the Single License Server Model is used.

**Autodesk** **macrovision™**

**You will need a SAMreport-Lite license file for each server in your environment.  
Please select which license server model you are using:**

[Get Help Here](#)

- c. Enter the Ethernet Address number (pulled from the LMTOOLS in step 2).

Autodesk **macrovision™**

\*License Server HostID

[Get Help Here](#)

d. You will then get a confirmation screen saying your request has been submitted.

Autodesk **macrovision™**

**License Fulfillment Information**  
 Your license certificate has been generated and sent via email to: lholland@masterg.com  
 For the Redundant license server model, you must install this certificate on each license server.  
 For the Distributed license server model, individual license certificates for each server have been generated and sent separately to the above email address.

[Get Help Here](#)

e. A few minutes later you will get an email from Macrovision with some text in it.

macrovision

**License Fulfillment**

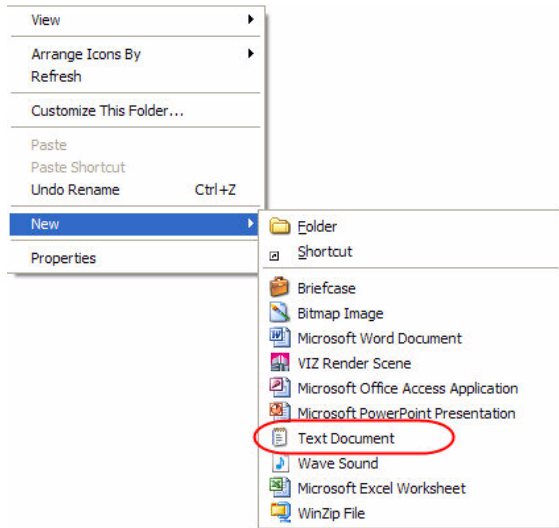
Following is your License

```

INCREMENT SAMreport_lite gsi 3.0 1-jan-0 0D9825F91257752A7591 \
VENDOR_STRING="VENDOR:radskflex HOSTID:000000000000 \
000000000000" HOSTID=ANY NOTICE="For use only by Macrovision \
SN=W13691"
INCREMENT SAMreport_lite gsi 3.0 1-jan-0 1D9825C9B4FC68AA3281 \
VENDOR_STRING="VENDOR:sglawd HOSTID:000000000000 \
000000000000" \
HOSTID=ANY NOTICE="For use only by Macrovision SN=W13691"
  
```

Copyright © 1990-2005 Macrovision Corporation and/or Macrovision Europe Ltd. All Rights Reserved. Macrovision and FLEXnet are registered trademarks of Macrovision Corporation. All other names are trademarks, registered trademarks, or service marks of their respective owners. Macrovision Corporation, 2850 De La Cruz Boulevard, Santa Clara, CA 95050, United States.

4. Browse to your Network license manager folder located in:  
**C:\Program Files\Autodesk Network License Manager\**



5. Go to the license folder and right click anywhere in the explorer window.
6. Select **New > Text document**.
7. Name the file **SAM.lic**
8. Open up the new text file in Notepad and paste the license information from the Macrovision email into the file.
9. Save and close the text file.

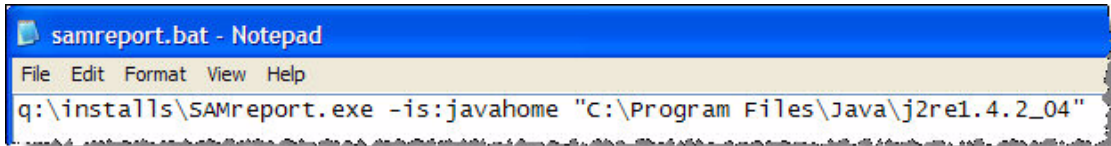
10. Now, download the most recent version of SamReport from <http://usa.autodesk.com/adsk/servlet/index?siteID=123112&id=2538394&linkID=9240618>

11. Save the exe to a directory where you can find it later.

(It is usually faster to download and install it from Autodesk than to wait for the DVD to initialize. Also, downloading the exe makes it easier to troubleshoot errors you might get. )

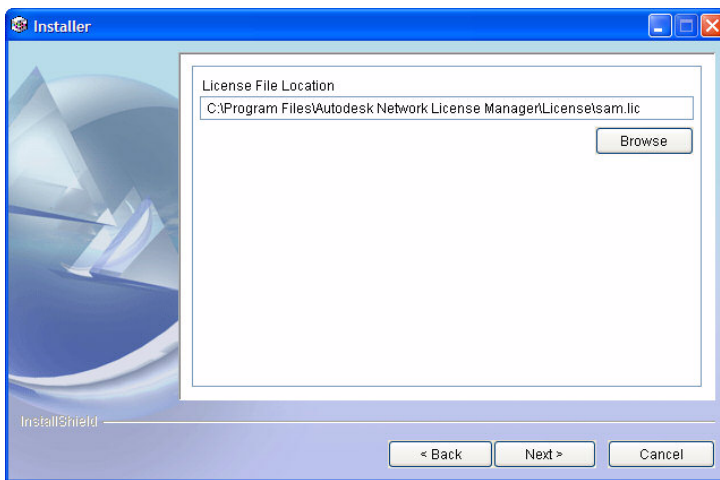
12. Next, back in your license manager folder, right-click and select **New > Text Document**.

13. This time, name the file **SAMReport.bat**

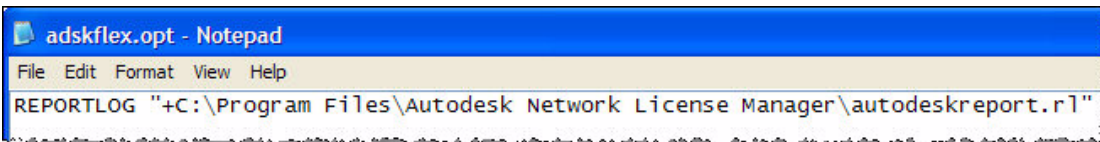


```
q:\installs\SAMreport.exe -is:javahome "C:\Program Files\Java\j2re1.4.2_04"
```

14. Right click on the file and select edit.
15. Add the path to the **Samreport.exe** as well as the path to the java application. (As shown above). Save and close the bat file.
16. Double Click the new bat file to install SamReport.
17. When it asks for the path to the Sam license file, browse to the file we created earlier called sam.lic.

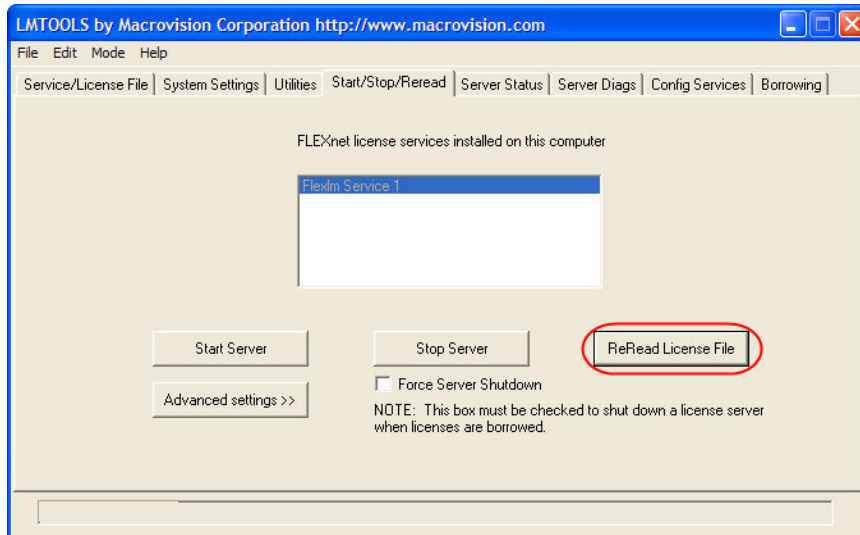


18. After the installation is finished, use Windows explorer to get back to the network license manager directory.
19. Again, right click and create a new text document. Name the file **adskflex.opt**
20. Place a line in the OPT file as shown below. Note there is a space between REPORTLOG and the first quote in the path to the **autodeskreport.rl** file. A report log will be created in the next step and will contain the license usage information Sam will build its reports on.



```
REPORTLOG "+C:\Program Files\Autodesk Network License Manager\autodeskreport.rl"
```

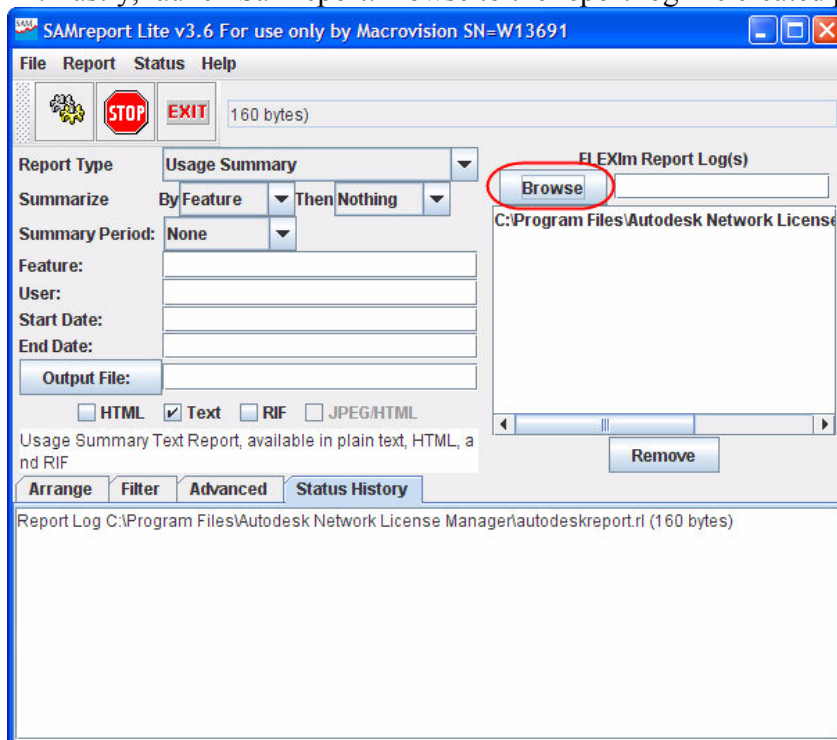
21. Save and close the opt file.
22. Go back to **LMTOOLS** and click the **Reread License File** button on the **Start/Stop/Reread** tab.



23. If the Reread is successful, a new file will be created in the directory you specified in the opt file. You may close LMTTOOLS.

If the file is NOT created, check your license manager setup and check for errors in the adskflex.opt file.

24. Lastly, launch Samreport. Browse to the report log file created previously.



Your Sam Report is now plugged in and *almost* ready to use. Right now the report log is new and does not contain reportable data yet. Wait a few days before generating your first report, or you'll only receive errors.